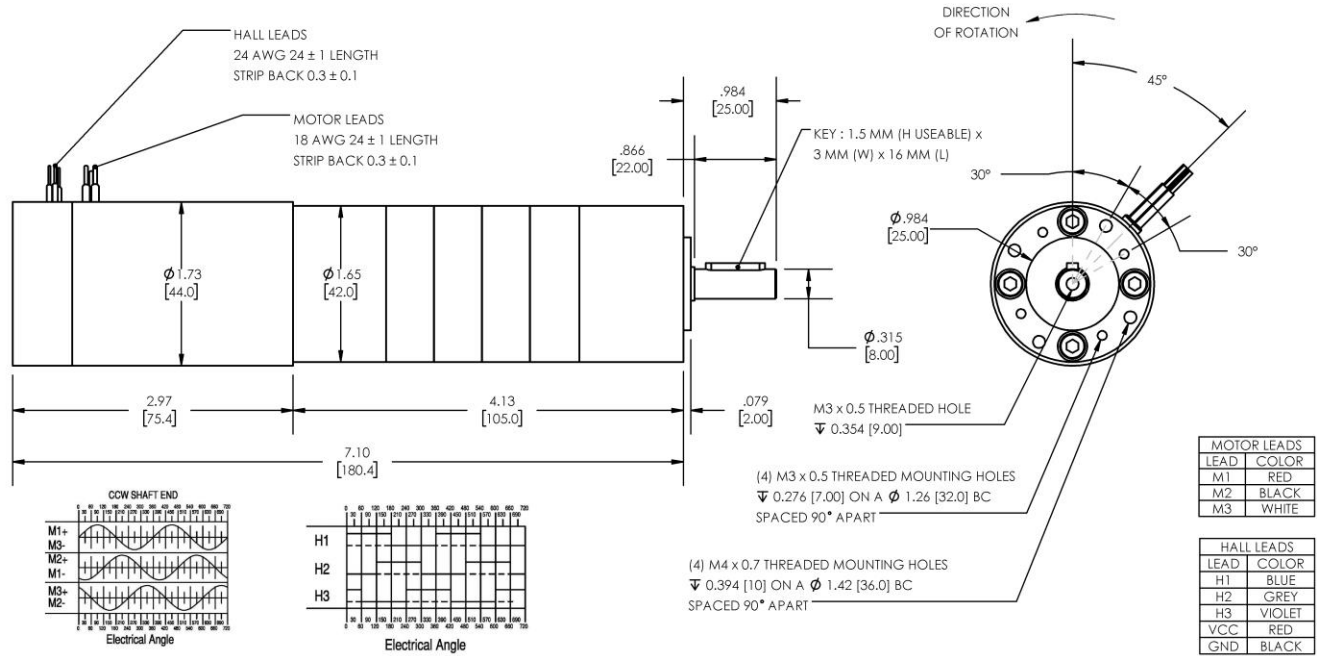




REVERSIBLE BRUSHLESS DC PLANETARY GEARMOTOR

Model Number:

MMP BL44-297G-90V GP42-1594



DIMENSIONS ARE INCHES [MM] UNLESS OTHERWISE STATED

| PLANETARY GEARMOTOR OUTPUT PARAMETERS: | VALUE | UNITS | TOLERANCE |
|--|--------------|-------------|-----------|
| Gearhead Ratio (exact) | 1593.65 : 1 | | |
| Gearhead Shaft Output Speed (at full-load) | 4.1 | RPM | MAX |
| Gearmotor Rated Continuous Torque | 266 | In-Lbs | MAX |
| Gearmotor Rated Peak Torque | 266++ | In-Lbs | ---- |
| Gearhead Standard Backlash | 63 | Arc Minutes | MAX |
| Gearhead Efficiency | 65% | ---- | ---- |
| Output Shaft Radial Load Capacity | 68 | Lbs | MAX |
| Output Shaft Axial Load Capacity | 25 | Lbs | MAX |
| Gearmotor Total Weight | 2.5 | Lbs | MAX |

++ All Peak Torque values are dependent upon duty. Contact our sales office for details.

| DC MOTOR PERFORMANCE PARAMETERS: | VALUE | UNITS | TOLERANCE |
|----------------------------------|-------|-----------|-----------|
| Rated DC Voltage | 90 | DC VOLTS | ---- |
| Rated Continuous Current | 0.29 | AMPERES | ---- |
| No-Load Speed | 6626 | RPM | +/- 15% |
| Rated Speed | 6497 | RPM | +/- 15% |
| Rated Continuous Power Out | 20 | WATTS | +/- 15% |
| Rated Continuous Torque | 4.1 | OZ-IN | ---- |
| Peak Torque (motor only) | 141 | OZ-IN | ---- |
| No-Load Current | 0.07 | AMPERES | 10% |
| Back EMF Constant (Ke) | 13.5 | V/KRPM | +/- 10% |
| Torque Constant (Kt) | 18.3 | OZ-IN/AMP | +/- 10% |
| DC Armature Resistance | 7.80 | OHMS | +/- 15% |
| Armature Inductance | 6.48 | mH | +/- 15% |
| Armature temperature | 155 | DEG. C | MAX |

NOTES:

- ENCODER & BRAKE OPTIONS AVAILABLE – [FOLLOW THIS LINK FOR DETAILS](#)
- NEMA MOUNTING FLANGE OPTION AVAILABLE – [FOLLOW THIS LINK FOR DETAILS](#)

MIDWEST MOTION PRODUCTS, INC

DESIGN, MANUFACTURING & DISTRIBUTION - MOTION CONTROL EQUIPMENT

www.midwestmotion.com

email: sales@midwestmotion.com